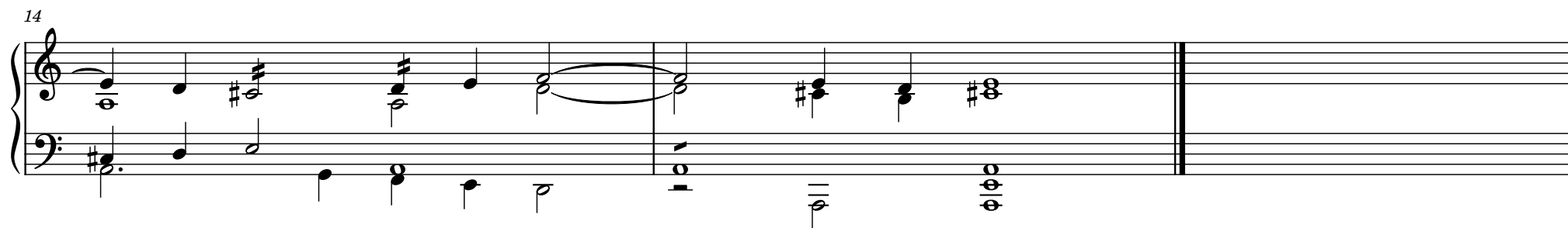
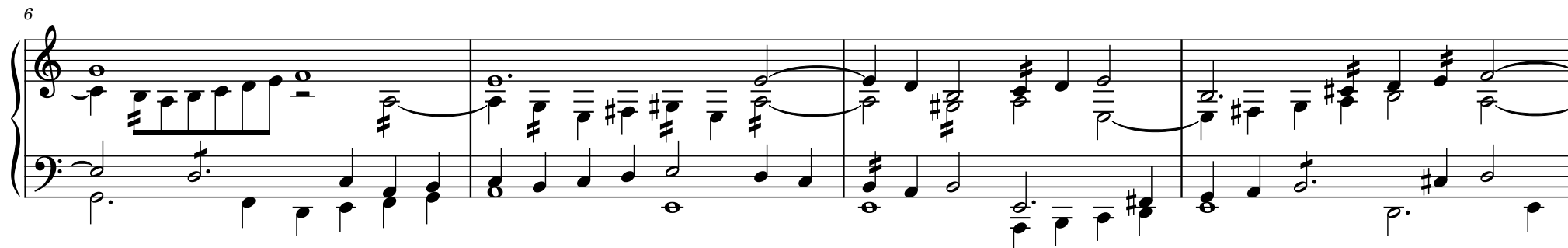
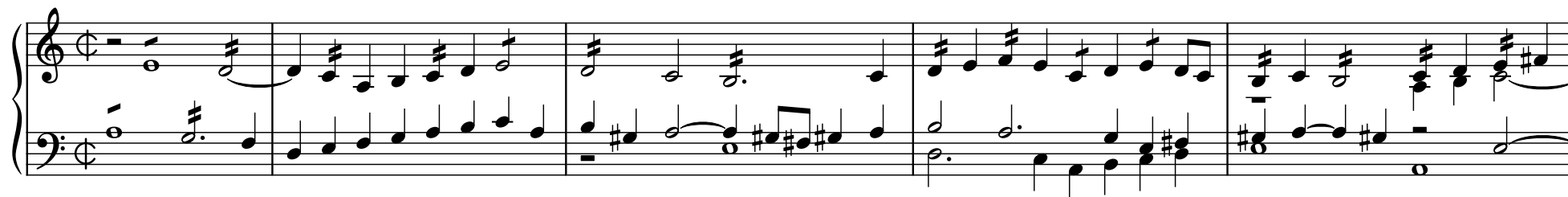


Gibbons fantasia MB 6 in d trasp. to a (AA-a') & g (GG-g')



17

Measures 17-21 of a musical score in bass clef. The key signature has two flats (B-flat and E-flat). Measure 17 starts with a whole rest in the right hand and a half note B-flat in the left hand. Measures 18-21 feature a complex interplay of eighth and sixteenth notes in both hands, with various accidentals (sharps and naturals) indicating chromatic movement. The piece concludes with a whole note chord in the final measure.

22

Measures 22-26 of a musical score in bass clef. The key signature remains two flats. Measure 22 begins with a half note B-flat in the left hand and a half note G-flat in the right hand. Measures 23-26 continue with intricate rhythmic patterns, including eighth and sixteenth notes, and feature several accidentals. The section ends with a whole note chord in the final measure.

27

Measures 27-30 of a musical score in grand staff (treble and bass clefs). The key signature is two flats. Measure 27 starts with a half note B-flat in the left hand and a half note G-flat in the right hand. Measures 28-30 show a continuation of the complex rhythmic and melodic lines from the previous section, ending with a final whole note chord in the last measure.